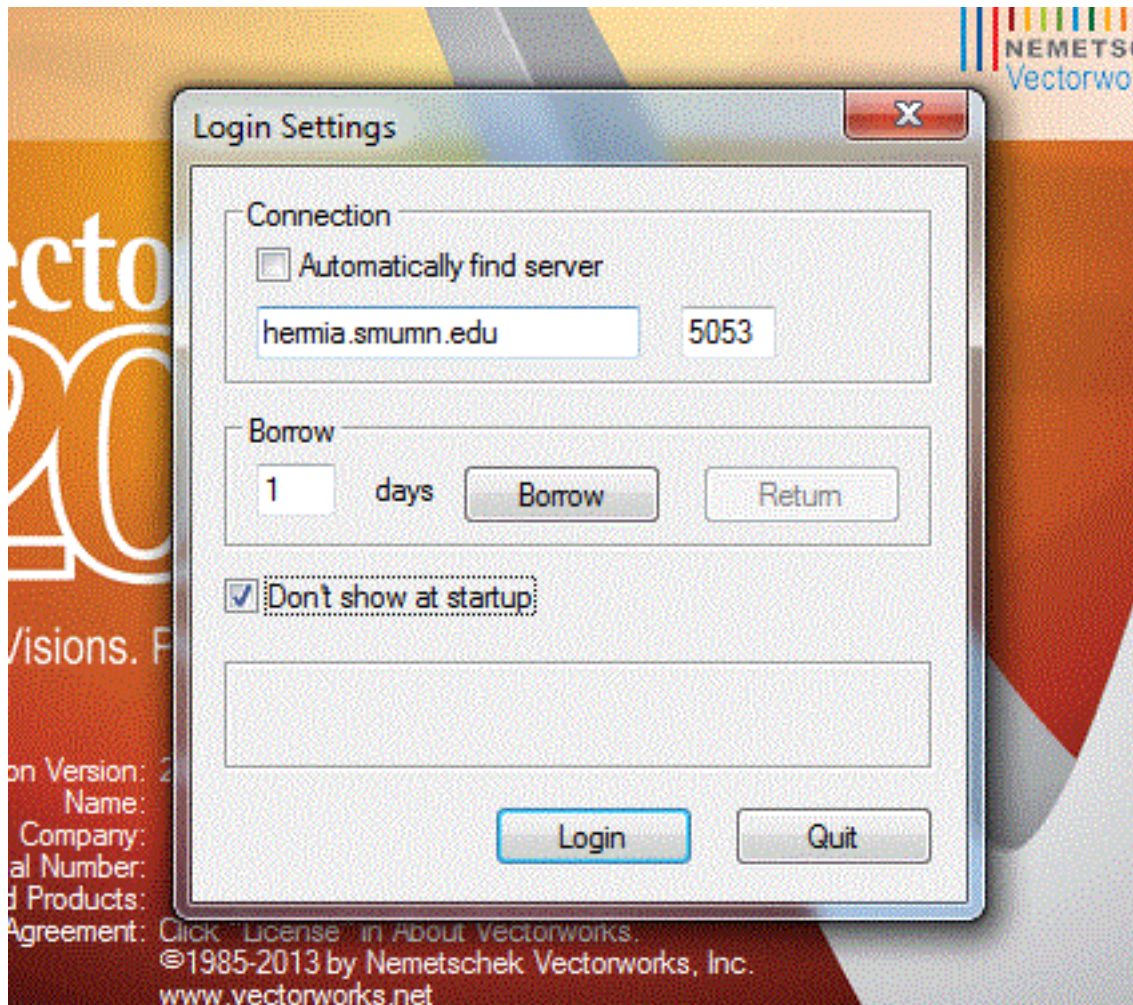


Software

How do I open Vectorworks?

Vectorworks is available in SJ233C and the Page Theater Production Office.

The first time you open it, you will need to fill in this screen to match the below settings. The server should be hermia.smumn.edu and the port should be 5053. Check the box next to Don't show at startup. Click Login



You will have to do this one time at each device that you use.

Next you will see a Firewall message "Do you want the application "CineRender.app" to accept incoming network connections?" Click Allow. This will popup every time you open Vectorworks.

The vendor has been contacted about both issues and tickets have been logged.

Unique solution ID: #1381

Author: n/a

Software

Last update: 2014-10-20 16:24